



Thank you for your interest in helping the animals of the Animal Welfare League of Arlington!

This *Do-It-Yourself* packet outlines several fun and easy projects that will help our animals have a better experience while in our care!

When your project is finished, please complete the [Passion Into Action Challenge Volunteer Hours Form](#) to let us know how many hours you spent on completing your project, give us feedback on your experience, and schedule the delivery of your completed project items. You will be emailed a copy of your service details once you submit the form.

Note: A Parents may need to assist in completing this form for younger children (an email address is required).

If you have any questions about this project or have an idea for other projects that you'd like to consider, please contact Jennifer Katac, Director of Community Programs at jkatac@awla.org or (703) 931-9241, ext. 213



Promote AWLA Animals

Materials:

- Paper
- Writing/drawing supplies
- OR
- Computer and printer



Instructions:

1. Visit our website at the links below to see animals available for adoption.
 - a. <https://www.awla.org/adopt/adopt-a-dog/>
 - b. <https://www.awla.org/adopt/adopt-a-cat/>
 - c. <https://www.awla.org/adopt/adopt-a-small-companion-animal/>

*Note- You may call the front desk to see if there are animals that have been at the shelter for a longer time (703-931-9241).
2. Make posters/flyers to share with friends and family, ask family members to include an email footer with the animal's name, picture, adoption link!
3. Ask local businesses to hang them, post them on community bulletin boards, or in schools.

How this helps the shelter:

This can help our adoptable animals find homes!



Promote AWLA's Upcoming Events

Materials:

- Social media account
- Email
- Printer

Instructions:

1. Promote upcoming events by sharing social media posts.
2. Send our flyers/event info by email.
3. Pass out flyers for larger events to your community group, school, or neighborhood.
4. For larger events, you can even pick up a bundle of flyers and pass them out in a neighborhood that we are targeting. *Please call (703) 931-9241, ext 200 to schedule a pick up.

Find upcoming events at: <https://www.awla.org/events/>

Share social media posts at:

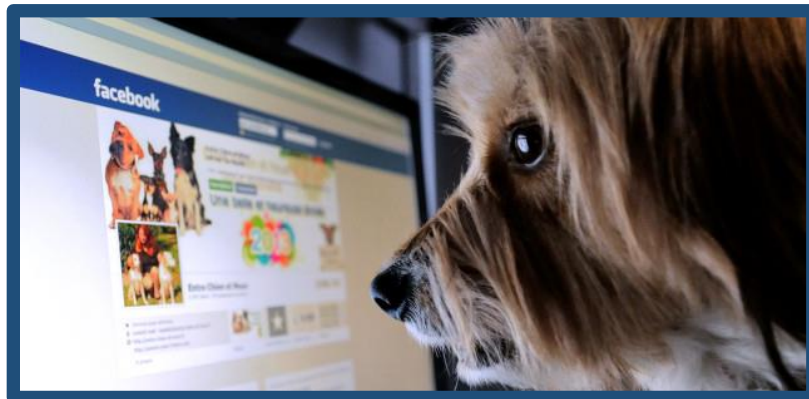
Facebook: <https://www.facebook.com/AWLArlington/>

Twitter: <https://twitter.com/AWLArlington>

Instagram: <https://www.instagram.com/awlaarlington/>

How this helps the shelter:

This will help AWLA promote the services/resources that we have available to the community, raise funds, make community connections, and also may help find homes for animals in our care.



Invite Us To Meet Your Friends

Materials:

- Involvement in Civic Association, Community Club, Group, Neighborhood Meeting, or Event

Instructions:

Give us a call so that we can come to your group and share information about all that we do. You can reach us at (703) 931-9241, ext. 200

How this helps the shelter:

Helps AWLA promote the services/resources that we have available to the community and find homes for our many animals.



Brochures Education and Awareness

Materials:

- Computer
- Printer
- Paper

Instructions:

1. Create flyers or brochures that encourage Emergency Pet Preparedness
 - a. Learn about emergency pet preparedness here:
<https://www.asPCA.org/pet-care/general-pet-care/disaster-preparedness>
 - b. Create a brochure or flyer to inform and educate your community about the importance of emergency preparedness and how to be prepared.
2. Create or brochures about Appropriate and Regular Vet Checkups/Vaccines
 - a. Learn about vet care here:
 - i. <https://www.asPCA.org/pet-care/general-pet-care/vaccinations-your-pet>
 - ii. <https://www.asPCA.org/pet-care/general-pet-care/spayneuter-your-pet>
 - b. Create a brochure or flyer to inform and educate your community about vet care.
3. Create other educational topics for pet care or wildlife
 - a. Pick an area that interests you and help spread the awareness!
 - i. <https://www.asPCA.org/pet-care>

How this helps the shelter:

This supports AWLA's mission through education and awareness.



Become a Wildlife Ambassador

Information:

- Do you have an interest for the native Wildlife here in Arlington?
- Do you know that more than 50% of the calls Animal Control receives daily is questions relating to Wildlife?
- Most of these calls can be resolved with basic wildlife information.
- Help us by being a Wildlife Ambassador!



Instructions:

From hosting presentations, informing your classmates/friends, creating brochures, or working to get to know more about local wildlife rehabbers- the options are endless! Learn more about wildlife here:

<https://www.humanesociety.org/resource/wildlife-management-solutions>

How this helps the shelter:

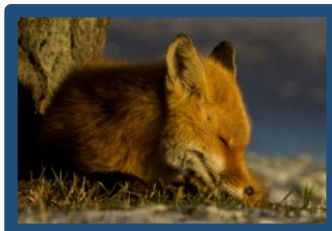
AWLA is committed to helping our Arlington community co-exist harmoniously with native wildlife.

We adhere to the following principals in dealing with wildlife:

1. Respect for the environment.
2. Tolerance and understanding of living things.
3. Humane approaches to resolving conflicts using non-lethal means.

We believe that wildlife-human conflicts can be resolved by understanding wild creatures' habits and behaviors and by identifying human behaviors that contribute to conflict.

All League staff will work to educate the public, endorse humane protection of our native species, and encourage appreciation of our ecosystems while protecting the Arlington community.



Animal Control Awareness Advocate

Information:

- Did you know that Arlington County has an Animal Control Department?
- These officers handle all animal related calls for service within Arlington and work alongside the Police Department, Fire Department, and all first responders.
- They are the first line of defense for the welfare of all the animals in our community.
- This department manages over 3,500 calls annually related to animal cruelty, neglect, dangerous dogs, wildlife, strays at large, etc.



Instructions:

We are looking for passionate young people who want to spread the word about what Animal Control does and how to get a hold of Animal Control when needed.

Learn more about Animal Control here: <https://www.awla.org/animal-control/>

